

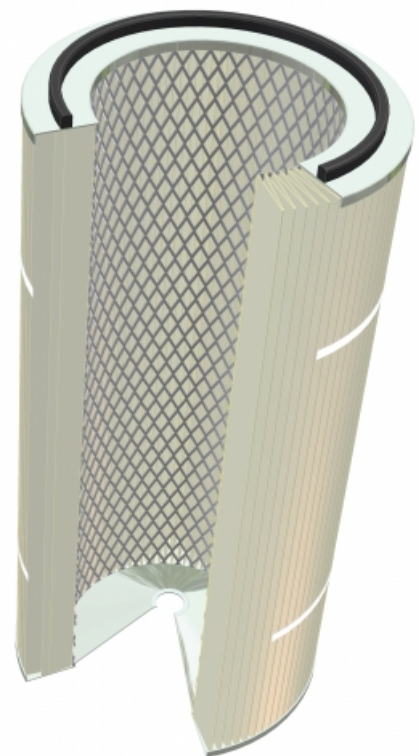
DIN cartridge

Open/closed

Model : **CD325/1000** Part

No : **BBR1003**

01 Top cap	Material and type: GALVANIZED METAL Top gasket material: 1 x FOAMED Top gasket - Size mm: 10x12
02 Inner construction	Inner mesh material: GALVANIZED EXPANDED METAL
03 Filter media	Type: 909FC - Polyester - PTFE-coating m2: 18,00 Number of pleats: 188
04 Outer construction	Bands - Material and type: POLYESTER - GLUED Bands - Qty: 2
05 Bottom cap	Type: CLOSED WITH 13 MM BOLT HOLE Material: GALVANIZED METAL
06 Temperature	Max temp - Operating C: 80 Max temp - Peak C: 90
07 Other	Grounding cable: No ATEX compliant: No FDA compliant: No



	Dimensions (mm)
A top cap outer diameter	325
B top cap inner diameter	215
C length	1000
D bottom cap outer diameter	325
E bottom cap inner diameter	N/A
E1 mounting hole	13
F pleat height	48

Please notice: Technical data is subject to change without notice

DIN cartridge

Open/closed

Model : **CD325/1000** Part

No : **BBR1003**



This picture shows the same type as described in the Parameters section. However, there can be deviations in some parameters eg. in length of filter, type/color of media etc.